

BYOG - Landslide

INTRO:

C G/B Am7 G/B (2x)

VERSE 1:

C G/B Am7 G/B

I took my love, took it down

C G/B Am7 G/B

I climbed a mountain and I turned around

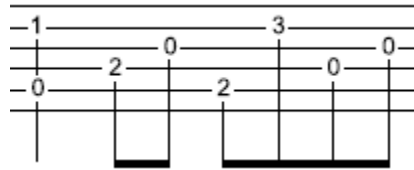
C G/B Am7 G/B

And I saw my reflection in the snow-covered hills

C G/B Am7

'Til the landslide brought me down

Am7 G/B



Fingerpicking on strings:

2 3 4 2 5 3 4
&
5



VERSE 2:

C G/B Am7 G/B

Oh, mirror in the sky, what is love?

C G/B Am7 G/B

Can the child within my heart rise above?

C G/B Am7 G/B

Can I sail through the changing ocean tides?

C G/B Am7 G/B

Can I handle the seasons of my life?

C G/B Am7 G/B C G/B Am7 D7/F#
mmm . . . mmm . . . mmm

Fingerpicking on strings:

2 3 4 2 6 3 4
&
6

CHORUS:

G D/F# Em Em

Well, I've been afraid of changing

C G/B Am7 D7/F#

'Cause I've built my life around you

G D/F# Em Em

But time made you bolder even children get older

C G/B Am7 G/B

And I'm getting older too



SOLO:

C G/B

A guitar solo notation for two measures. The first measure is for a C chord and the second for a G/B chord. The notation shows fingerings on the strings: 1-2-3 on the high E string, 1-2-0 on the D string, 0-2-0 on the G string, and 3-2-0 on the low E string. A slur covers the notes 0-2-0 on the G string across both measures, with a (3) above the second measure. A double bar line is at the end of the second measure.

(D/A) G/B

A guitar solo notation for two measures. The first measure is for a (D/A) chord and the second for a G/B chord. The notation shows fingerings: 5-3 on the high E string, 0-0-0 on the D string, 0-0-0 on the G string, and 2-0-2 on the low E string. A slur covers the notes 0-2-0 on the G string across both measures. A double bar line is at the end of the second measure.

C G/B

A guitar solo notation for two measures. The first measure is for a C chord and the second for a G/B chord. The notation shows fingerings: (0)-1-2-0 on the high E string, 3-2-0 on the D string, 0-2-0 on the G string, and 3-2-0 on the low E string. A slur covers the notes 0-2-0 on the G string across both measures. A double bar line is at the end of the second measure.

Ending 1
then
repeat
Ending2

ENDING 1:

AM7 G/B

A guitar solo notation for two measures. The first measure is for an AM7 chord and the second for a G/B chord. The notation shows fingerings: 1-3-2 on the high E string, 0-2-0 on the D string, 0-2-0 on the G string, and 2-0-2 on the low E string. A slur covers the notes 2-0-2 on the low E string across both measures, with a (2) above the second measure. A double bar line is at the end of the second measure.

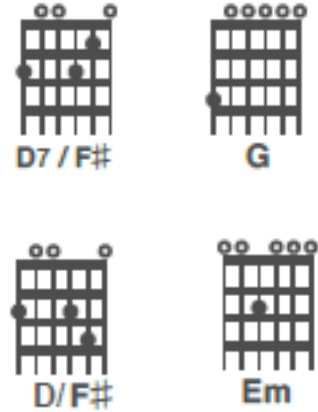
Ending 2:

D/A D

A guitar solo notation for two measures. The first measure is for a D/A chord and the second for a D chord. The notation shows fingerings: 2-3-2-3 on the high E string, 5-3-2-3 on the D string, 0-0-0 on the G string, and 2-0-3-1-0-2 on the low E string. A slur covers the notes 2-0-3-1-0-2 on the low E string across both measures. A double bar line is at the end of the second measure.

CHORUS:

G D7/F# Em Em
 Well, I've been afraid of changing
C G/B Am7 D7/F#
 'Cause I've built my life around you
G D7/F# Em Em
 But time makes you bolder even children get older
C G/B Am7 G/B
 And I'm getting older too
C G/B Am7 G/B
 Oh, I'm getting older too

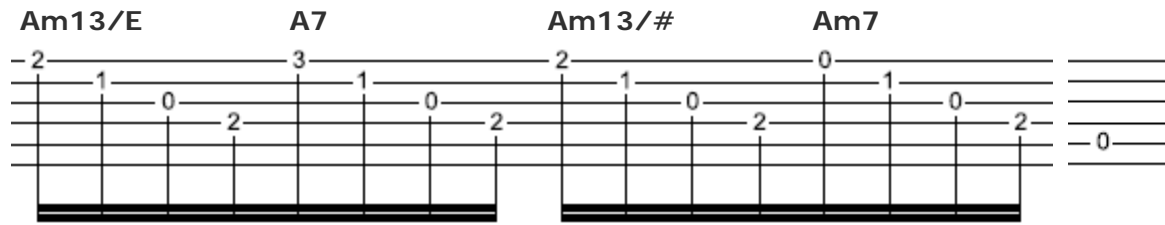


VERSE 3:

C G/B Am7 G/B
 I take my love, take it down
C G/B Am7 G/B
 I climbed a mountain and I turned around
C G/B Am7 G/B
 And if you see my reflection in the snow-covered hills
C G/B Am7 (hold)
 Will the landslide bring you down



OUTRO:



And if you see my reflection in the snow-covered hills

C G/B Am7 G/B
 Will the landslide bring you down, oh, oh
C G/B Am7
 The landslide bring me down